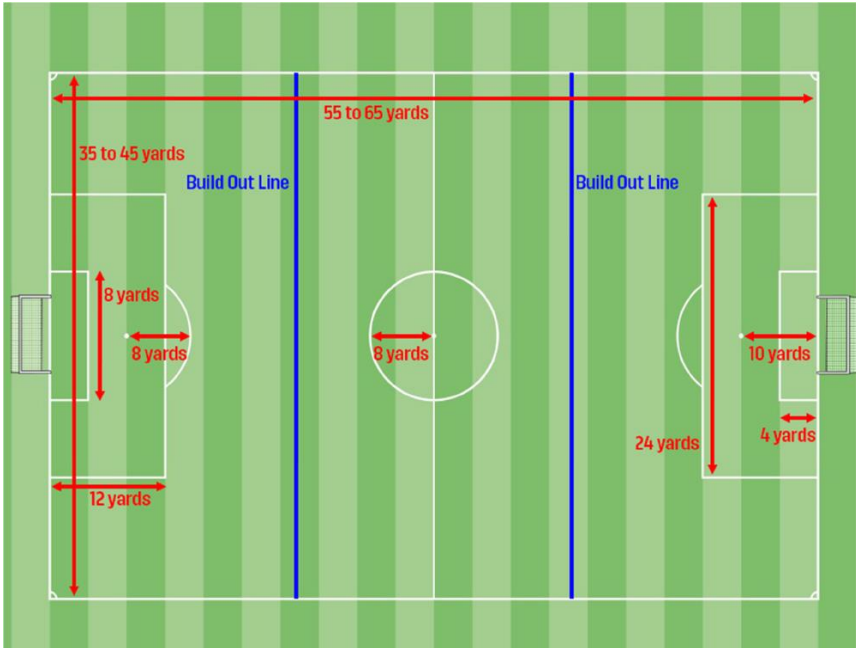


Colorado Soccer Association

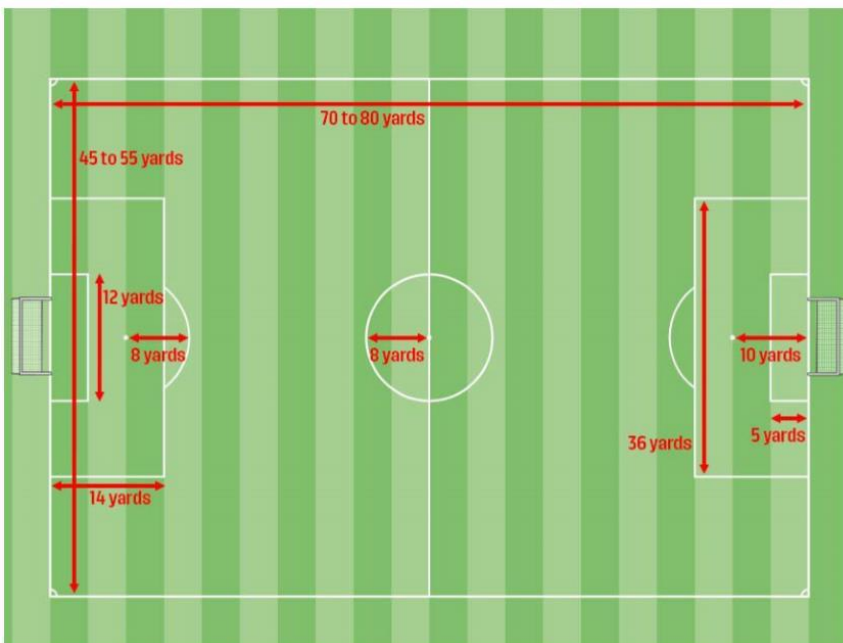
Front Range League Modified Laws of the Game

Law 1- The Field of Play

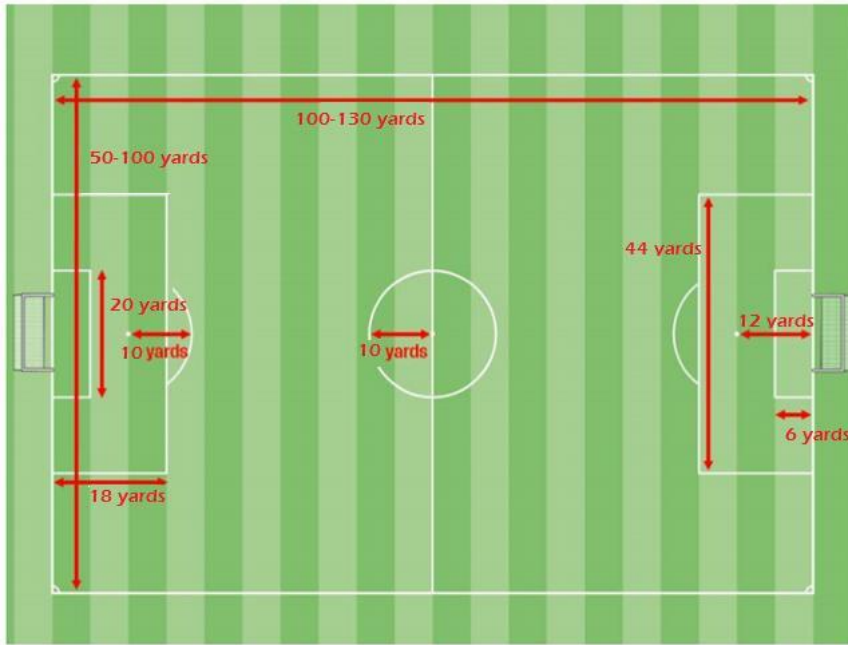
- The team listed first on the official game schedule shall be designated as the home team.
- The home team shall be responsible for the conditions of the grounds, field markings, and proper equipment. All matches shall have proper markings (cones and flags are NOT proper markings), goals must be anchored, and fields shall conform to the USYS recommended dimensions below.
 - 9U and 10U



- 11U-14U



- 15U-19U



- For 9U-10U, a build out line is to be a line of different color or dotted, across the field equidistant between the penalty area line and the halfway line.
 - When the goalkeeper has the ball, either during play from an opponent (made a save), or taking a goal kick, the opposing team must move behind the build out line until the ball is put into play.
 - The ball is considered “in play” when the goalkeeper’s intended recipient has received the ball, NOT the moment the goalkeeper releases the ball.
 - The ball is in play from a goal kick when it leaves the penalty area.
 - Goalkeepers in possession of the ball may pass with their feet or throw/roll the ball into play when the opponents have retreated behind the build out line. Once the ball has been put back into play, the opposing team can cross the build out line and play resumes as normal.
 - Teammates of the goalkeeper may receive the ball from the goalkeeper between the build out line and the goal line. When the ball is played by the teammate, whether they pass it or control it, opponents may cross the build out line.
 - Goalkeepers may NOT punt the ball. Drop kicking the ball is the same as punting. If the goalkeeper punts or drop-kicks the ball, the referee will stop play with the whistle and award an indirect free kick to the opposing team on the penalty area line parallel to the where the infringement occurred.
- Both teams and the coaching staff shall remain on one side of the field. All spectators shall remain on the opposite side of the field when feasible. The coach of the home team shall have the right to designate which side the teams and spectators be placed on respectively. Enforcement of this law will be the responsibility of the referee.
- All spectators shall remain at least 5 feet from touchlines or goal lines, unless spectator lines establish a different distance. No person shall be permitted behind the goal-areas unless seated in bleachers.

Law 2- The Ball

- Teams shall use balls as follows:

Age Group	Ball Size
9U-12U	4
13U-19U	5

- Each team shall supply the referee with one or more suitable balls, properly inflated and in good condition. The referee shall choose the ball to be used in the game.

Law 3- The Players

- Team roster and playing sizes are as follows:

Age Group	# of Players on Field	Minimum on Field	Roster Limit
9U-10U	7v7	5	12
11U-12U	9v9	6	16
13U-14U	9v9	6	16
15U-19U	9v9	6	18

- For all age groups, substitutions are unlimited can occur at any stoppage with the permission of the referee.

Law 4- The Player's Equipment

- The following items are NOT permitted:
 - Hair control devices with any hard parts.
 - Jewelry of any sort, including earrings of any kind. Covering earrings with tape or similar material is NOT permitted and will not be allowed by the referee.
- The following items are CONDITIONALLY permitted:
 - Medical tags which are taped to the body.
 - Splints, casts, braces, or other joint support devices which, in the referee's opinion, are not inherently dangerous or are sufficiently padded with pliable materials to eliminate the dangerous condition.
 - Goalkeepers may wear a hat with a soft, pliable brim only when shielding eyes from direct sunlight.
- NOTE: Failure of the referee to notice illegal equipment shall not be cause for protest.
- If both teams are wearing similar colored jersey, the home team shall wear dark jerseys and the visiting team shall wear light-colored jerseys. If the visiting team does not have a light-colored jersey, then they should wear an alternate dark color that does not conflict with the home team's jersey. Either team's goalkeepers shall change jerseys as the referee directs regardless of the home/visitor status.
- All players starting each half or entering the field at a substitution shall have their jerseys fully tucked into their shorts.
- A field player may wear long-sleeve shirts under short-sleeve jerseys or trousers only in the case of adverse weather conditions.

Law 5- The Referee

- Minimum certification requirement is a U.S. Soccer Grade 9.
- Only the diagonal system of control (one whistle only) shall be used. If there are only two registered officials, one shall referee and the other shall be assistant referee. If available, non-registered volunteers may serve as a club assistant referees. The diagonal system of control consists of one referee and two assistant referees. All competitions sanctioned by the U.S. Soccer Federation require the use of this

officiating system. Referees may not officiate a game using a two-whistle system. Use of a two-whistle system may result in possible fines, forfeiture of game fee, or disciplinary action.

- Prior to the start of Front Range League games, the referee shall conduct a team check-in, which consists of the following steps:
 - Referees and Assistant Referees shall introduce themselves to each team coach and request a copy of the certified team roster and USYS player passes or the picture roster to proceed with the team check-in for the players desiring to participate in the game.
 - Verify the identity of each player and coach with the picture on his/her USYS member/player pass or on the picture roster.
 - If a team does not have a valid state approved roster and/or one or more of the player passes, the referee is encouraged to allow the game to proceed with the following understanding:
 - The referee will send a written report to CSA noting the absence of roster(s) and/or player passes.
 - If a roster is not available, the offending team's coach or team manager will provide the referee with a written list of players' names and corresponding jersey numbers of participants in the game.
 - The referee will advise the non-offending team coach or team official of the missing information.
 - The fact that there is missing information is not a valid reason to protest the game.
 - CSA will review the referee report and will discipline coaches and/or players who are deemed to have taken unfair advantage of this rule, including but not limited to, the suspension of players and/or coaches and/or forfeiture of the game
 - Note the name of any person on the roster not participating because of suspension and record confirmation of the sit out in the game report.
 - Inspect the equipment of each player for safety and conformance with the Laws of the Game and Modified Laws of the Game.
- At the completion of game, the referee shall:
 - Make note of the names and numbers of any players or coaches were sent off or dismissed from the competition and any serious injuries that might have occurred.
 - Return the roster and passes or picture roster to the appropriate team representatives.
 - Confirm notes of details with the referee crew of any incidents that will need to be included in the final game report, which includes the identity and details of the offense of any participant who has been cautioned or sent off or has committed misconduct prior to, during, or after the completion of the game.
 - Enter final score and any required incident report in GameOfficials.net – After Games within 24 hours of game completion. Be sure to note any cautions, dismissals, or serious injuries in your incident reports, as well as confirming that a player or coach served a sit out.
 - Retain your notes and reports for personal records. Referees need to be available to explain or clarify incidents in writing and/or in person and/or by telephone at an official hearing if requested.
 - If the referee's report is not received in GameOfficials.net within 3 calendar days of the game date, or if the report is lacking crucial information, missing game reports will result in a fine, \$5 reduction in game fee or potentially the referee may not be paid for a game missing a complete and accurate report.
- If a scheduled game is not played, the referee shall submit an incident report and indicate the reasons for not playing the game.
- If a scheduled game is not played due to a lack of referee, the coach(es) shall submit a written report to CSA.

- The referee’s judgment with regard to the fitness or safety conditions of the field for play shall be final.
 - EXCEPTION: Persons who hold park or field permits, and/or have responsibility for field condition may close the field to play.
- Disruptive behavior from the technical area by coaches or spectators from the touchline is prohibited and will be regarded as irresponsible behavior, warranting a report of misconduct equivalent to a caution or a sending off offense. Tactical coaching from the touchline, within the set technical area, is permitted but must be done in a manner which is not disruptive to the game.

Referees shall reference the game reporting procedures and step-by-step instructions provided by CSA, Assignors, and the Colorado Referee Committee each season. View the instructions in GameOfficials.net messages and on ColoradoReferees.com or ColoradoSoccer.org.

Law 6- The Other Match Officials

- Front Range League games will have a center referee assigned to each game. Assistant Referees will be assigned to games as referee availability and resources permit.

Law 7- The Duration of the Match

- Match duration are as follows:

Age Group	Duration	Halftime
9U-10U	2x25 minutes	10 minutes
11U-12U	2x30 minutes	10 minutes
13U-14U	2x35 minutes	10 minutes
15U-19U	2x40 minutes	10 minutes

- No overtime play for league matches.

Law 8- The Start and Restart of Play

- No modifications made to the IFAB Laws of the Game.

Law 9- The Ball in and out of Play

- No modifications made to the IFAB Laws of the Game.

Law 10- Determining the Outcome of a Match

- No modifications made to the IFAB Laws of the Game.

Law 11- Offside

- For 9U-10U, players cannot be penalized for an offside offense between the halfway line and the build out line. Offside infractions only apply between the build out line and the end line.
- For 11U-19U, regular offside laws apply per the IFAB Laws of the Game.

Law 12- Fouls and Misconduct

- No modifications made to the IFAB Laws of the Game.

Law 13- Free Kicks

- For 9U-10U, there is no deliberate heading allowed. If a player deliberately heads the ball in a game, an indirect free kick should be awarded to the opposing team from the spot of the offense. If the heading occurs within penalty area, the referee shall move the ball outside the penalty area and award an indirect free kick to the opposing team.

Law 14- The Penalty Kick

- No modifications made to the IFAB Laws of the Game.

Law 15- The Throw-In

- No modifications made to the IFAB Laws of the Game.

Law 16- The Goal Kick

- No modifications made to the IFAB Laws of the Game.

Law 17- The Corner Kick

- No modifications made to the IFAB Laws of the Game.